

# Compal confidential

## Schematics Document

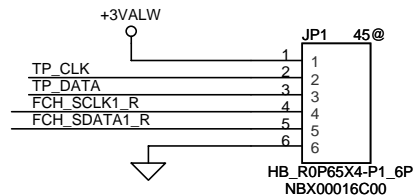
LS-8713P TP BTN board

2011-12-27

ver: 0.2

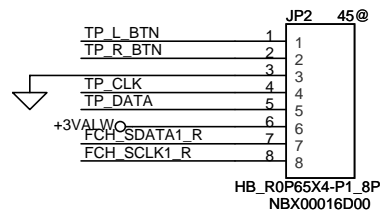
Security Classification		Compal Secret Data		Title	
Issued Date	2009/09/04	Deciphered Date	2006/07/26	Compal Electronics, Inc.	
THIS SHEET OF ENGINEERING DRAWING IS THE PROPRIETARY PROPERTY OF COMPAL ELECTRONICS, INC. AND CONTAINS CONFIDENTIAL AND TRADE SECRET INFORMATION. THIS SHEET MAY NOT BE TRANSFERRED FROM THE CUSTODY OF THE COMPETENT DIVISION OF R&D DEPARTMENT EXCEPT AS AUTHORIZED BY COMPAL ELECTRONICS, INC. NEITHER THIS SHEET NOR THE INFORMATION IT CONTAINS MAY BE USED BY OR DISCLOSED TO ANY THIRD PARTY WITHOUT PRIOR WRITTEN CONSENT OF COMPAL ELECTRONICS, INC.				SCHEMATICS, TP/B S8713	
				Document Number	
				405MIK	
Date: Tuesday, January 10, 2012				Sheet	1 of 3

## To Main board

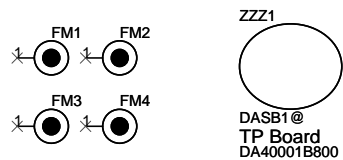
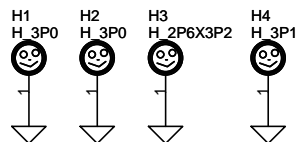


Hot bar FFC pitch=1.0mm

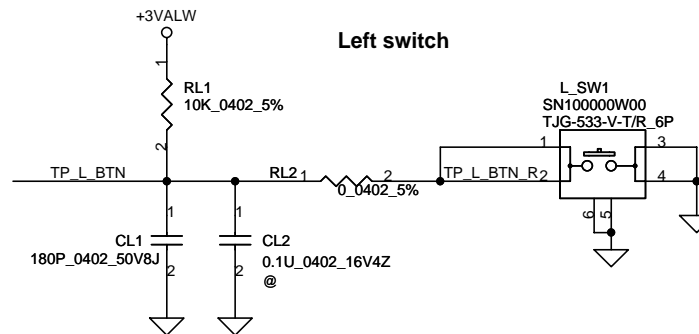
## To T/P Module



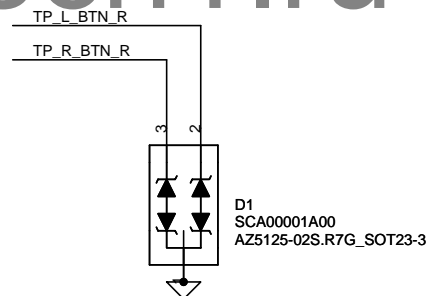
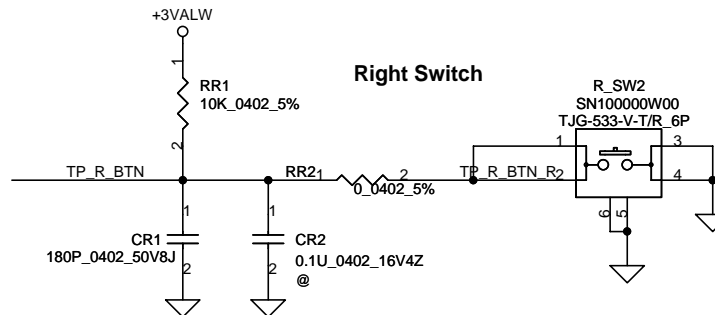
Hot bar FFC pitch=1.0mm



### Left switch



### Right Switch



Security Classification	Compal Secret Data			Compal Electronics, Inc.	
Issued Date	2009/09/04	Deciphered Date	2006/07/26	Title	SCHEMATICS,TP/B S8713
THIS SHEET OF ENGINEERING DRAWING IS THE PROPRIETARY PROPERTY OF COMPAL ELECTRONICS, INC. AND CONTAINS CONFIDENTIAL AND TRADE SECRET INFORMATION. THIS SHEET MAY NOT BE TRANSFERRED FROM THE CUSTODY OF THE COMPETENT DIVISION OF R&D DEPARTMENT EXCEPT AS AUTHORIZED BY COMPAL ELECTRONICS, INC. NEITHER THIS SHEET NOR THE INFORMATION IT CONTAINS MAY BE USED BY OR DISCLOSED TO ANY THIRD PARTY WITHOUT PRIOR WRITTEN CONSENT OF COMPAL ELECTRONICS, INC.				Document Number	405M1K
				Rev	A
				Date:	Tuesday, January 10, 2012
				Sheet	2 of 3

Version Change List ( P. I. R. List )

Item Page# Title Change Description Cut-In Date

www.aitech1.ru